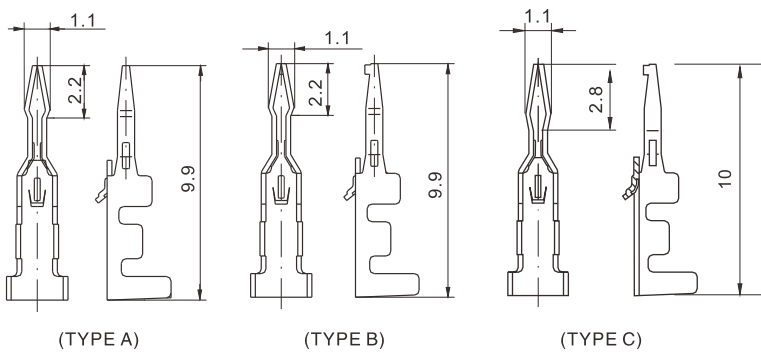




技术参数 (SPECIFICATIONS)

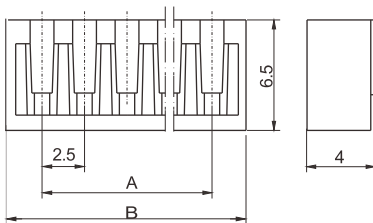
适用线规 (Applicable wires) : AWG#26~AWG#22
 适应基板厚度 (Applicable PC board thickness) : 1.2~1.6 mm
 温度范围 (Temperature range) : -25℃~85℃
 额定电压 (Voltage rating) : 250V AC/DC
 额定电流 (Current rating) : 2A
 绝缘电阻 (Insulation resistance) : $\geq 1000M\Omega$
 耐压 (Withstand voltage) : 1000V AC/minute
 认证 (STANDARDS) : E200881

端子 TERMINAL



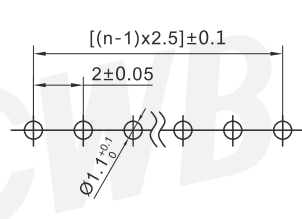
型号 Type	适用导线范围 Wire Range		导线外径 Wire ins. Dis
	mm ²	AWG#	
CZ-SCN	0.13~0.33	26~22	1.3~1.6
材质 · 表面处理 Material and Finish			
磷青铜 镀锡 Phos · bronze Tin · Plated			

壳体 HOUSING

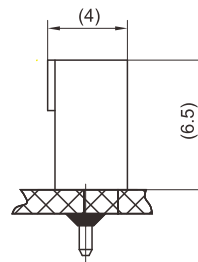


线数 Poles	型号 Type	尺寸 Dimensions(mm)		线数 Poles	型号 Type	尺寸 Dimensions(mm)	
		A	B			A	B
2	SCN-2A	2.5	6.5	9	SCN-9A	20.0	24.0
3	SCN-3A	5.0	9.0	10	SCN-10A	22.5	26.5
4	SCN-4A	7.5	11.5	11	SCN-11A	25.0	29.0
5	SCN-5A	10.0	14.0	12	SCN-12A	27.5	31.5
6	SCN-6A	12.5	16.5	13	SCN-13A	30.0	34.0
7	SCN-7A	15.0	19.0	14	SCN-14A	32.5	36.5
8	SCN-8A	17.5	21.5	15	SCN-15A	35.0	39.0
材质 · 表面处理 Material and Finish						PA66 UL94V-0 PA66 UL94V-2	

安装尺寸 MOUNTING MEASUREMENT



PCB Layout



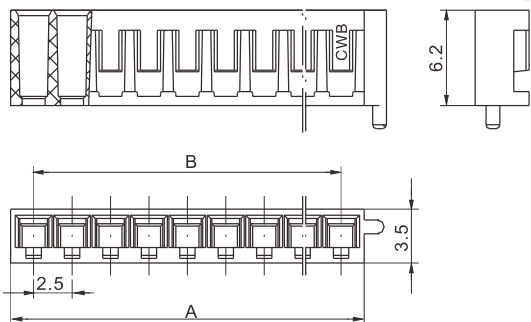
Assembly View (DIM FYI)

SCN 型条形连接器

SCN Bar Connector

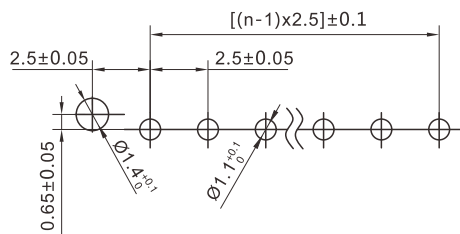
间距 (space) :2.5mm

壳体 HOUSING

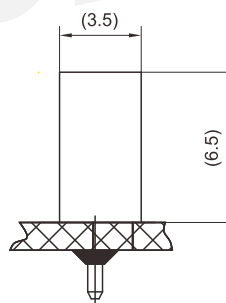


线数 Poles	型号 Type	尺寸 Dimensions(mm)	
		A	B
2	SCN-2AD	5.5	2.5
3	SCN-3AD	8.0	5.0
4	SCN-4AD	10.5	7.5
5	SCN-5AD	13.0	10.0
6	SCN-6AD	15.5	12.5
7	SCN-7AD	18.0	15.0
8	SCN-8AD	20.5	17.5
9	SCN-9AD	23.0	20.0
10	SCN-10AD	25.5	22.5
11	SCN-11AD	28.0	25.0
12	SCN-12AD	30.5	27.5
13	SCN-13AD	33.0	30.0
14	SCN-14AD	35.5	32.5
15	SCN-15AD	38.0	35.0
材质 · 表面处理 Material and finish		PA66 UL94V-2	

安装尺寸 MOUNTING MEASUREMENT



PCB Layout



Assembly View (DIM FYI)