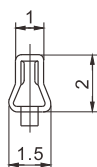
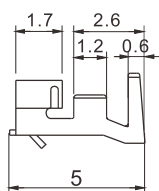


### 技术参数 ( SPECIFICATIONS )

适用线规 ( Applicable wires ) : AWG#30~AWG#24  
 适应基板厚度 ( Applicable PC board thickness ) : 1.6mm  
 温度范围 ( Temperature range ) : -25°C~85°C  
 额定电压 ( Voltage rating ) : 250V AC/DC  
 额定电流 ( Current rating ) : 2A  
 接触电阻 ( Contact resistance ) :  $\leq 0.01\Omega$   
 绝缘电阻 ( Insulation resistance ) :  $\geq 1000M\Omega$   
 耐压 ( Withstand voltage ) : 800V AC/minute

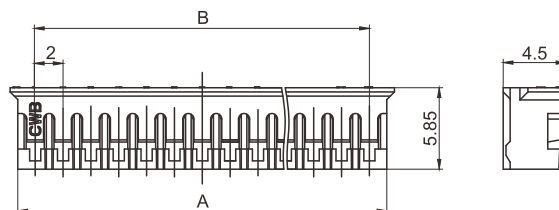
认证 ( STANDARDS ) :  E200881

### 端子 TERMINAL



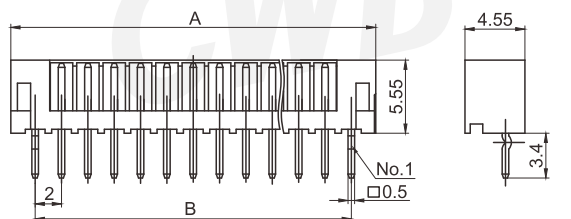
型号 Type	适用导线范围 Wire Range		导线外径 Wire ins.Dis
	mm <sup>2</sup>	AWG#	
CH-TJC19	0.05 ~ 0.22	30 ~ 24	0.9~1.5
材质 · 表面处理 Material and Finish			
磷青铜 镀锡 Phos · bronze Tin · Plated			

### 阴连接器 HOUSING

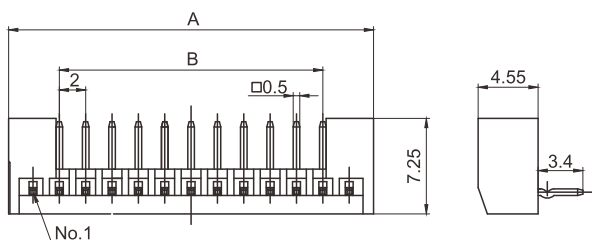


线数 Poles	型号 Type	尺寸 Dimensions(mm)		线数 Poles	型号 Type	尺寸 Dimensions(mm)	
		A	B			A	B
2	TJC19-2Y	4.5	2.0	10	TJC19-10Y	20.5	18.0
3	TJC19-3Y	6.5	4.0	11	TJC19-11Y	22.5	20.0
4	TJC19-4Y	8.5	6.0	12	TJC19-12Y	24.5	22.0
5	TJC19-5Y	10.5	8.0	13	TJC19-13Y	26.5	24.0
6	TJC19-6Y	12.5	10.0	14	TJC19-14Y	28.5	26.0
7	TJC19-7Y	14.5	12.0	15	TJC19-15Y	30.5	28.0
8	TJC19-8Y	16.5	14.0	16	TJC19-16Y	32.5	30.0
9	TJC19-9Y	18.5	16.0	17	TJC19-17Y	34.5	32.0
材质 · 表面处理 Material and Finish				PA66 UL94V-0			

#### 阳连接器 ( 直式 ) HEADER ( 180° )

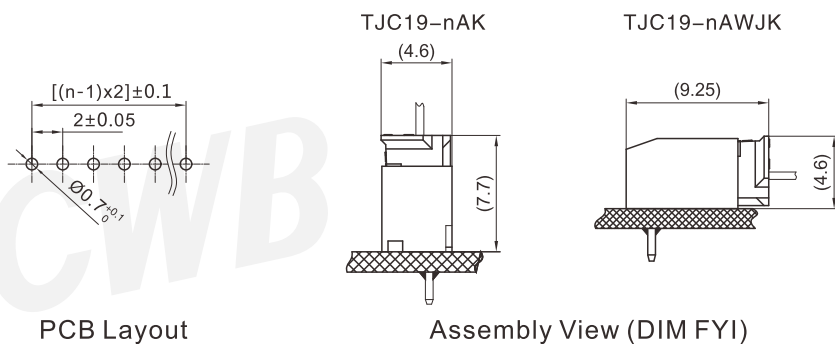


#### 阳连接器 ( 弯式 ) HEADER ( 90° )

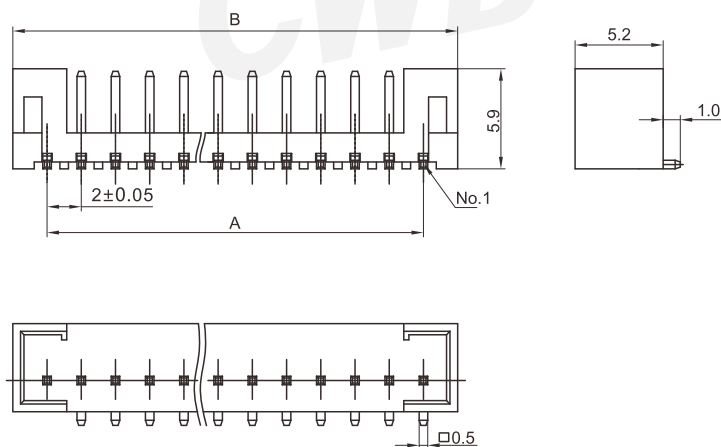


线数 Poles	型号 Type		尺寸 Dimensions(mm)		线数 Poles	型号 Type		尺寸 Dimensions(mm)	
	直式 ( 180° )	弯式 ( 90° )	A	B		直式 ( 180° )	弯式 ( 90° )	A	B
2	TJC19-2AK	TJC19-2AWJK	6.0	2.0	10	TJC19-10AK	TJC19-10AWJK	22.0	18.0
3	TJC19-3AK	TJC19-3AWJK	8.0	4.0	11	TJC19-11AK	TJC19-11AWJK	24.0	20.0
4	TJC19-4AK	TJC19-4AWJK	10.0	6.0	12	TJC19-12AK	TJC19-12AWJK	26.0	22.0
5	TJC19-5AK	TJC19-5AWJK	12.0	8.0	13	TJC19-13AK	TJC19-13AWJK	28.0	24.0
6	TJC19-6AK	TJC19-6AWJK	14.0	10.0	14	TJC19-14AK	TJC19-14AWJK	30.0	26.0
7	TJC19-7AK	TJC19-7AWJK	16.0	12.0	15	TJC19-15AK	TJC19-15AWJK	32.0	28.0
8	TJC19-8AK	TJC19-8AWJK	18.0	14.0	16	TJC19-16AK	TJC19-16AWJK	34.0	30.0
9	TJC19-9AK	TJC19-9AWJK	20.0	16.0	17	TJC19-17AK	TJC19-17AWJK	36.0	32.0
材质 · 表面处理 Material and Finish					PA66 UL94V-0; 黄铜 镀锡 Brass Tin · Plated				

#### 安装尺寸 MOUNTING MEASUREMENT

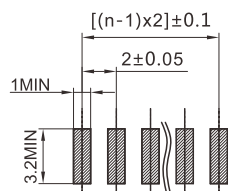


阳连接器 ( 弯式 ) HEADER ( 90° )

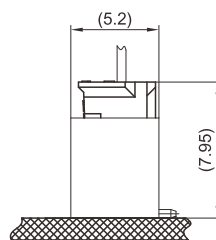


线数 Poles	型号 Type	尺寸 Dimensions(mm)		线数 Poles	型号 Type	尺寸 Dimensions(mm)	
		A	B			A	B
2	TJC19B-2AWJK	2	6	9	TJC19B-9AWJK	16	20
3	TJC19B-3AWJK	4	8	10	TJC19B-10AWJK	18	22
4	TJC19B-4AWJK	6	10	11	TJC19B-11AWJK	20	24
5	TJC19B-5AWJK	8	12	12	TJC19B-12AWJK	22	26
6	TJC19B-6AWJK	10	14	13	TJC19B-13AWJK	24	28
7	TJC19B-7AWJK	12	16	14	TJC19B-14AWJK	26	30
8	TJC19B-8AWJK	14	18	15	TJC19B-15AWJK	28	32
材质 · 表面处理 Material and Finish				PPS UL94V-0; 黄铜 镀锡 Brass Tin · Plated			

安装尺寸 MOUNTING MEASUREMENT



PCB Layout



Assembly View (DIM FYI)