

TJC28 型条形连接器

TJC28 Bar Connector

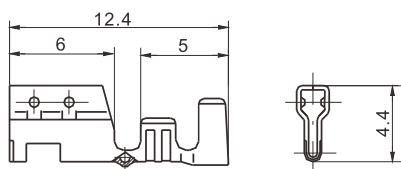
间距 (space) : 7.5mm



技术参数 (SPECIFICATIONS)

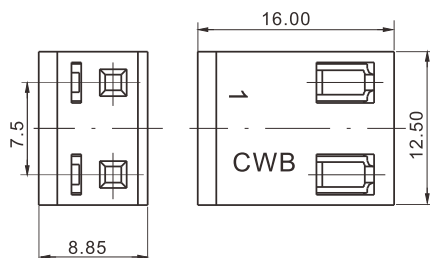
适应基板厚度 (Applicable PC board thickness) : 1.6mm
 温度范围 (Temperature range) : -25°C~85°C
 额定电压 (Voltage rating) : 250V AC/DC
 额定电流 (Current rating) : 3A
 接触电阻 (Contact resistance) : $\leq 0.01\Omega$
 绝缘电阻 (Insulation resistance) : $\geq 1000M\Omega$
 耐压 (Withstand voltage) : 1500V AC/minute

端子 TERMINAL



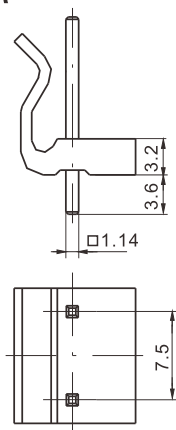
型号 Type	适用导线范围 Wire Range		导线外径 Wire ins.Dis
	mm ²	AWG#	
CH-TJC28	0.33~0.83	22~18	1.6~2.05
材质 · 表面处理 Material and Finish			
磷青铜 镀锡 Phos · bronze Tin · Plated			

阴连接器 HOUSING



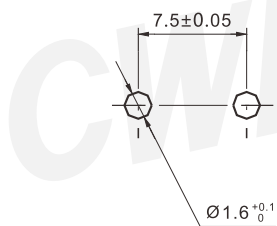
线数 Poles	型号 Type
2	TJC28-2Y
材质 · 表面处理 Material and Finish	
PA66 UL94V-0/PA66 UL94V-2	

阳连接器 HEADER

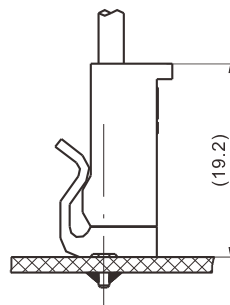


线数 Poles	型号 Type
2	TJC28-2A
材质 · 表面处理 Material and Finish	
PA66 UL94V-0/PA66 UL94V-2; 黄铜 镀锡 Brass Tin · Plated	

安装尺寸 MOUNTING MEASUREMENT



PCB Layout



Assembly View (DIM FYI)