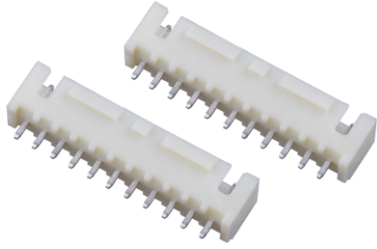


WB25B 型条形连接器

WB25B Bar Connector

间距 (space) : 2.5mm



技术参数 (Specifications)

适应基板厚度 (Applicable PC Board thickness) : 1.2~1.6 mm

温度范围 (Temperature range) : -25°C~85°C

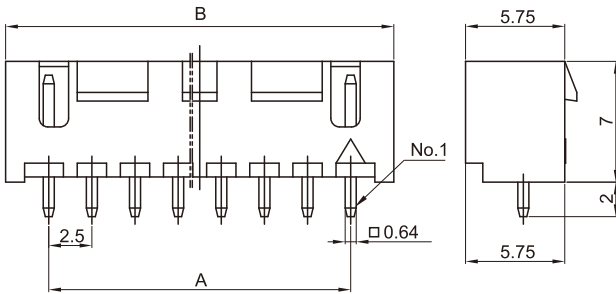
额定电压 (Voltage rating) : 250V AC/DC

额定电流 (Current rating) : 3A

绝缘电阻 (Insulation resistance) : $\geq 1000M\Omega$

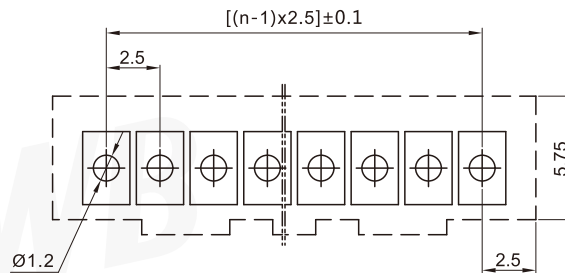
耐压 (Withstand voltage) : 1000V AC/minute

阳连接器 (立式, 穿孔回流) Header (V, PIP)



线数 Poles	型号Type	颜色Color	尺寸Dimensions (mm)	
			A	B
2	WB25B-002-137	Black	2.5	7.5
	WB25B-002-138	Blue		
	WB25B-002-139	Red		
3	WB25B-003-132	Natural	5.0	10.0
	WB25B-003-139	Red		
4	WB25B-004-130	Yellow	7.5	12.5
	WB25B-004-132	Natural		
	WB25B-004-138	Blue		
	WB25B-004-139	Red		
5	WB25B-005-132	Natural	10.0	15.0
	WB25B-005-137	Black		
	WB25B-005-138	Blue		
6	WB25B-006-132	Natural	12.5	17.5
	WB25B-006-138	Blue		
7	WB25B-007-132	Natural	15.0	20.0
	WB25B-007-137	Black		
8	WB25B-008-132	Natural	17.5	22.5
	WB25B-008-138	Blue		
9	WB25B-009-132	Natural	20.0	25.0
10	WB25B-010-130	Yellow	22.5	27.5
12	WB25B-012-132	Natural	27.5	32.5
材质·表面处理 Material and Finish				
PA UL94V-0; 黄铜 镀锡 Brass Tin·Plated				

安装尺寸 Mounting Measurement



PCB Layout